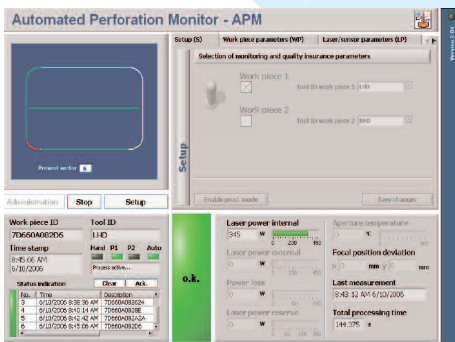


Stability check for laser beam sources (LSM)



For many applications it is important to monitor and document the production or rather machining process for the purpose of a 100 % inspection.

One of the most important components of a laser system and therefore decisive for the process quality, is the laser source with the relevant beam guiding system.

With the Laser Source Monitor (LSM) a multi-sensor system with evaluation module is available which is able to monitor the stability of a laser source. In addition it is possible to recognize losses in the beam guiding system and to document the process stability such way.

Besides a timely high-resolution performance control of pulsed beam sources the system offers the possibility, interacting with a REIS ROBOTstar control, to acquire and to document timing and sequence stability of the handling system during the machining process. The energies determined by the LSM system can be interlinked directly with the individual areas on the machining contour by means of a extensive communication protocol between measuring system and robot control. Adaptation to alternative handling systems and controls and cw-laser beam sources as well is possible.

The evaluation results determined by the LSM system are represented to the operator on the LSM user surface graphically and numerically. A sophisticated/sub-divided access restriction allows the establishment of three different user groups, normal operators, setters and administrators. Only the latter have full access to important evaluation and system parameters.

For interconnection of the system with a superimposed production process control the software is equipped with a communication interface based on the transfer of files.

The LSM system is already being successfully used in the automotive supplier range e.g. with the production of air-bag carriers of the BMW series 5 as well as for the production of the Sebring (DaimlerChrysler).

We are always at your disposal for any questions or further information.

Contact

Reis Lasertec GmbH
St. Jobser Straße 53
52146 Würselen
Phone: +49 (0)2405/45468-10
www.reislaserotec.de

