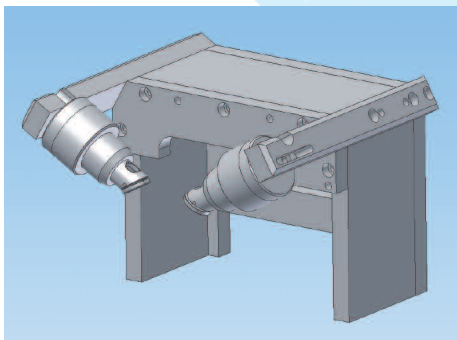


Position monitoring for scanner systems (ScanPos)



Laser scanner systems offer significant advantages for various applications, e.g. laser marking, in contrast to normal processing optics. With some applications a very high accuracy is required for positioning of the beam on the component in order to ensure the processing quality.

To ensure this accuracy it is necessary to check whether the scanner system remains in the same position and orientation relative to the component. For this, Reis Lasertec has developed a camera based sensor technology which is able to recognize deviations in both position and orientation.

Optionally, the sensors can be connected to a superimposed control so that an automated measuring sequence is possible. Another option is the calculation and evaluation of the deviation as displacement and relative orientation in the scanner coordinate system. This allows an automatic correction of the weld path by the scanner control.

We are always at your disposal for any questions or further information.



In the standard version the system is operated manually by the user who will initiate a measurement on the software user interface. In case of error (deviation of the reference position determined before) an error message will be given to the user on the software user interface.

Contact

Reis Lasertec GmbH
St. Jobber Straße 53
52146 Würselen
Phone: +49 (0)2405/45468-10
www.reislasertec.de